

NECCHI *Creator*

C35

Realize Your Creativity



Features

- Powerful DC Motor for Stable Stitching
- High Penetration in Low Speed
- 30% Energy Saving
- 180mm Wide Working Space
- 35 Built-in Stitches Include Stretch Stitches
- Quick Top Loading Bobbin System
- 1-Step Buttonhole
- Automatic Needle Threader
- Adjustable Stitch Length and Width
- Adjustable Presser Foot Pressure
- Bright LED Light
- Drop Feed



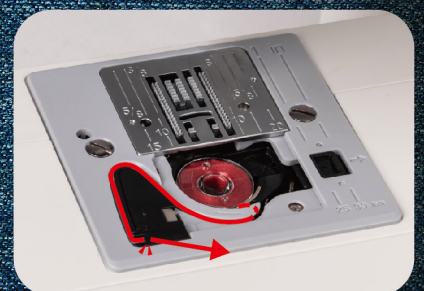
DC Motor
Powerful & Stronger Stitching



180 mm
Wide Working Space



Adjustable Presser
Foot Pressure



Quick Top Loading
Bobbin System

*Realize Your Creativity
For all purpose projects.*



35 Built-in Stitches



Leather



Denim



Stretch Fabrics



Zipper Sewing



Non-stick Foot

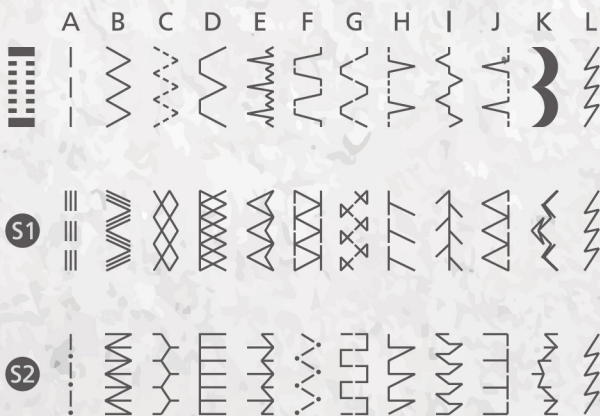


Jeans Support



Buttonhole Sewing

VERSATILE UTILITY STITCHES



USEFUL ACCESSORIES INCLUDED



- * Buttonhole foot
- * All purpose foot
- * Zipper foot
- * Button sewing foot
- * Non-stick foot
- * Roller foot
- * Edge/quilting guide
- * L-screwdriver
- * Pack of needles
- * Bobbin
- * Seam ripper/brush
- * Auxiliary spool pin
- * Spool holders
- * Spool pin felt
- * Jeans support
- * Soft cover

CONTACT

